



# LED Lighting – Case Study Auto Dealership Lighting

## LED Recessed Can Retrofit



This LED upgrade project resulted in

**62%**  
energy  
savings

**24**  
month  
payback

**25%**  
utility  
incentive

### Description of Work:

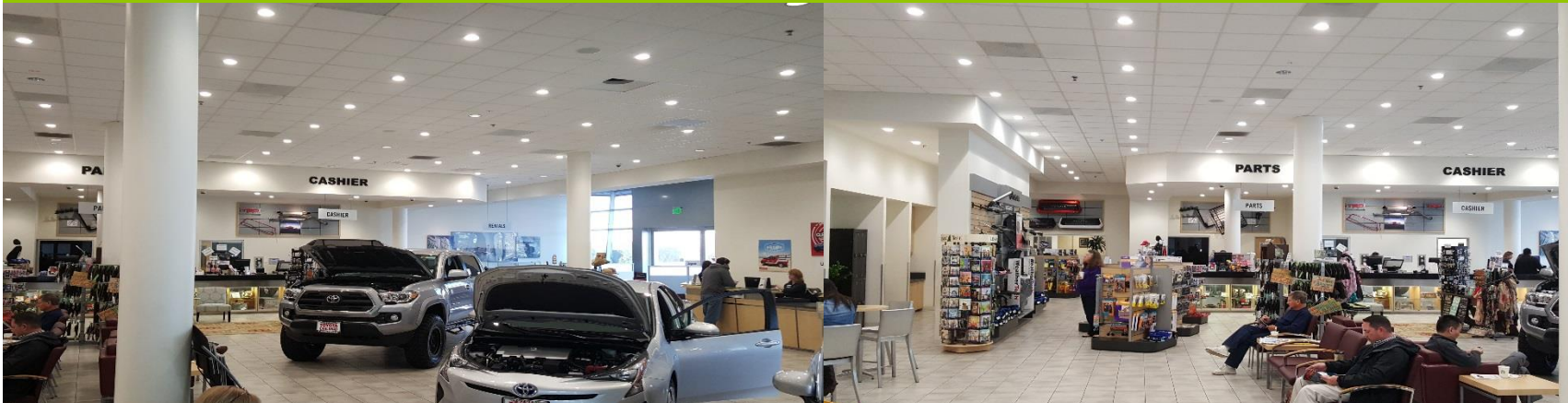
Energy Retrofit Co. helped Toyota Service Center retrofit the showroom with new LED recessed can retrofit kit. The energy cost for each fixture was reduced by 67%, and light levels have been improved with better color light (4000K) from the new LED.

Toyota will save more by the elimination of lighting maintenance with a product that is specified to last over 10 years at 60 hrs/week

Notable exterior lighting projects include:

- Mercedes of San Diego
- Crevier BMW
- San Diego BMW
- Toyota of San Diego
- Lexus of San Diego
- Lexus Newport Beach
- Toyota Carlsbad Collision
- Audi of Santa Ana
- Mini of Santa Ana
- Harden Buick/GMC
- Pedder Nissan

## Toyota Service Showroom



AFTER – 14W LED 6" Can Retrofit Kits